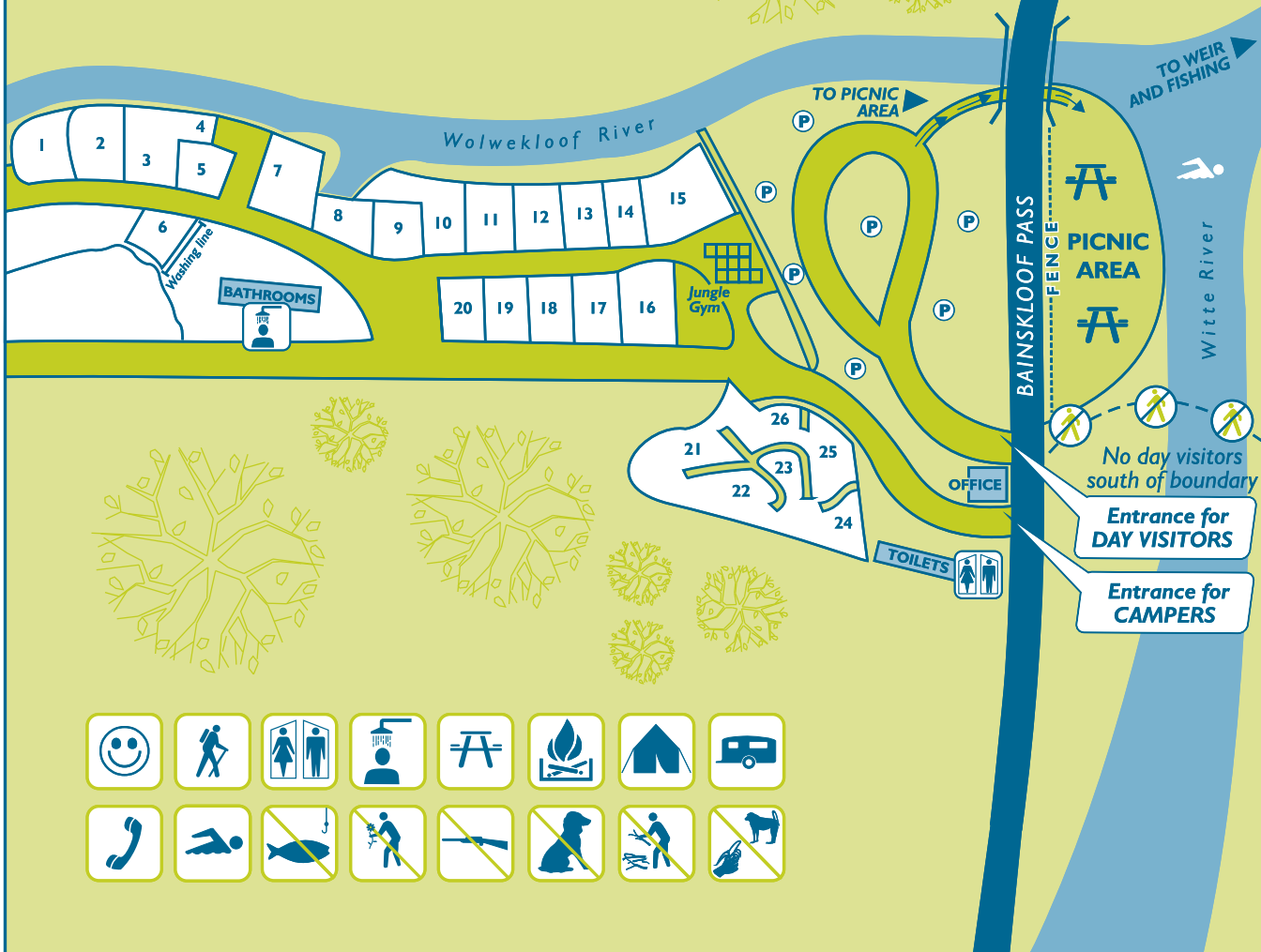




Tweede Tol

CAMP AND PICNIC SITE



TWEEDDE TOL CAMP AND PICNIC SITE



TWEEDE TOL CAMP AND PICNIC SITE



TWEEDE TOL is part of the Limietberg Nature Reserve - a vast 102 000ha of mountains, wildlife and fynbos. The site is located at the original tollgate of the beautiful Bainskloof Pass, built in 1853.

Campsite

There are 25 campsites, each with its own braai area. Hot and cold water bathrooms are available, as well as firewood, a public telephone and a jungle gym. There is a clothes line near the bathrooms (please don't put up your own). Campsite arrival and departure time is 10am and late arrivals will need to notify the camp manager on (023) 355 1607. Bathroom lights stay on until 10pm. Overnight camping rates include conservation fees and campers have exclusive use of the Wolwekloof River swimming holes. There is a maximum of six people per campsite. On departure at 10am, campers may pay the conservation day fee and move to the picnic area.

Picnic area

Day visitors pay the conservation fee only and can enjoy the picnic area and the Witte River swimming holes, although they may not access Limietberg's hiking trails, the campsite or the Wolwekloof swimming holes. Toilets are available – please take care to keep them clean and tidy.

Hiking

The 7.5km Rockhopper Trail runs upstream from Tweede Tol to Bainskloof Lodge. A marker at the river indicates the trail's start and finish. Campers and day visitors will need to book in advance and obtain a permit to walk beyond this point. A detailed hiking map is available from the office. There is also a wonderful swimming hole downstream towards the weir (see map) which can be accessed without a hiking permit.

Environment and safety

- Gas and wood braais are allowed but only at the designated points. Please ensure that all fires are thoroughly extinguished before you leave the area.
- Stay on trail paths as shortcuts cause trampling and erosion.
- Take care not to litter, damage, disturb or remove vegetation or wildlife.
- Respect the tranquility of nature and bring no generators, loud instruments or music equipment.
- Nude tanning or swimming is not acceptable.
- Loud and unruly behaviour is not acceptable.

- No picnicking (food or drink) is allowed at the swimming holes.
- Do not dive into rock pools as it can lead to serious accidents.
- Avoid throwing stones or rolling rocks.

Fire prevention

Limietberg has been ravaged by fire over the past ten years and today veld fire prevention is a priority. Please be extremely conscious of fire and do not make any fires in the nature reserve. Help us ensure the biodiversity of Limietberg is preserved for future generations and immediately report all fires and signs of smoke to the Reserve Manager on 082 494 9707.

Directions

From Cape Town, take the Klapmuts/Wellington turn-off on the N1. Turn left and continue for 20km until you reach Wellington. At the second set of robots, turn left into Piet Retief Street, then right at the next set of robots into Church Street. This leads onto Bainskloof Pass heading towards Worcester. Tweede Tol is approximately 16km from the Bainskloof Pass sign outside Wellington, on the left. Take care as the road through the pass is narrow and potentially dangerous.

Gate times

The gate is open from 8am to 6pm. On Fridays it closes at 8pm.

Reservations

Campsites and hiking trails need to be booked in advance, especially during peak seasons. The picnic area accommodates up to 100 visitors per day. **Tel: (021) 659 3500** or make a booking enquiry at www.capanature.co.za

Emergencies

(021) 871 1535/6 or (023) 355 1607 (weekdays)
082 494 9707 (weekends)

DISCLAIMER OF LIABILITY

All persons entering this conservation area and using its facilities, do so entirely at their own risk. The Western Cape Nature Conservation Board and/or its employees and/or agents and/or its successors in title shall not be liable for any damage, loss, theft, injury, accident or death suffered by any person, howsoever caused.

Right of Admission Reserved.

Rock Hopper Trail

7.5km (5hrs) - Permit required

This moderate to difficult trail challenges hikers to find a way along the boulder-strewn riverbed of the Witte River. From Tweede Tol, the trail leads upstream for 7.5km to Bainskloof Lodge, alternating between rock-hopping, walking and swimming. Look out for the tall yellowwoods among the riverine vegetation. There is no transport from Bainskloof Lodge so arrange a pick-up, leave a vehicle or hike 7.5km back to Tweede Tol.

